



Starfish Greathearts Foundation

ANNUAL REPORT 2024/25



Starfish®

GREATHEARTS FOUNDATION
LIFE, HOPE AND OPPORTUNITY



Starfish[®]
GREATHEARTS FOUNDATION
LIFE, HOPE AND OPPORTUNITY

The Starfish Parable

An old man had a habit of early morning walks along the beach. One day as he looked down the shore he saw a human figure moving like a dancer. As he came closer, he saw that it was a young woman and she was not dancing but reaching down to the sand, picking up starfish and very gently throwing them into the ocean.

"Young lady, why are you throwing starfish into the ocean?"

"The sun is up, and the tide is going out, and if I do not throw them in they will die," she replied.

"But there are millions of them, what difference can it possibly make?" he asked.

The young woman listened politely, paused and then bent down, picked up another starfish and threw it into the sea, past the breaking waves, saying "It made a difference to that one!"

Adapted from Loren Eiseley's
'The Star Thrower'



Help support
this cause!



Click here



Starfish[®]
GREATHEARTS FOUNDATION
LIFE, HOPE AND OPPORTUNITY

CONTENTS

Glossary, Vision, Mission, and Values	02
Chairperson's Report	03
Our Work	04
Letter from the Team	05
Highlights	06
Operations Manager's Report	09
Programme Overview	10
The Need	12
Starfish Key Competencies	14
Our Key Strengths	16
Starfish Value-add	17
Flagship Programmes	18
Our Stories	20
Our Footprint	22
Area of Focus	23
Finance Officer's Report	24
Meet the Team	25
Donors	26
Financial Review	27
Board of Directors	28
Get Involved	30
Get In Touch	30

Glossary

Term / Acronym	Definition
OVC&A	Orphans, Vulnerable Children and Adolescents. Refers to children who have lost one or both parents, or who are living in vulnerable circumstances such as poverty, abuse, neglect, or exposure to HIV/AIDS and other risks. Starfish Greathearts Foundation provides targeted support to ensure their wellbeing, education, and development.
MEL	Monitoring, Evaluation and Learning. A framework used by Starfish to track programme performance, measure impact, and learn from implementation to improve future outcomes.
CBOs (Our Partners)	Community-Based Organisations. Local partner organisations that work with Starfish to deliver programmes to children and communities.
CSI	Corporate Social Investment. Investment by companies into social programmes and community development initiatives, including funding and partnerships with organisations like Starfish.
FY	Financial Year. Starfish's reporting period from 1 April to 31 March each year.
IMCI	Integrated Management of Childhood Illness. A globally recognised approach developed by WHO and UNICEF to improve child health by addressing the major causes of illness and death in children under five, including pneumonia, diarrhea, malaria, malnutrition, and other preventable conditions.



“As we work to create light for others, we naturally light our own way.”

Mary Anne Radmacher



Vision

Children in South Africa are valued, protected and empowered to realise their full potential.



Values

Starfish believes:

- In providing best practice holistic care to children orphaned or vulnerable.
- In serving and being a voice for children in a manner that reflects professionalism, integrity, innovation and creativity.
- That every individual in our global community can make a positive contribution.
- In communicating to its donor base with transparency, integrity, professionalism, excellence and accountability.



Mission

Starfish supports children orphaned or vulnerable in South Africa by working in partnership with community-based organisations.

Chairperson's Report



Theme: "Against All Odds" For the Year Ending March 2025

The year 2024-2025 has been one of resilience, growth, and transformation for Starfish Greathearts Foundation. Guided by our theme, "Against All Odds," we navigated challenges with courage, strengthened our impact, and embraced new opportunities to serve vulnerable children and families across South Africa.

We welcomed new non-executive board members, Her Excellency Ambassador Prudence Mocumi and Dr. Jessica Price, whose expertise has strengthened our governance and strategic direction. Our team also expanded with the appointment of a Projects Manager and an Admin & Events Coordinator, enhancing our organisational capacity and community engagement.

A key highlight of the year was our successful High Tea event in partnership with Investec Bank SA, supported by strong media coverage that amplified awareness of our work nationwide.

Despite economic and social challenges, our programmes across Education, Health & Wellness, Nutrition, and Social Services continued to positively impact over 35,000

children across five provinces. Through strengthened partnerships and ongoing capacity building, we continue to support sustainable change in under-resourced communities.

The resilience of our staff, caregivers, and partners reflects the true spirit of "Against All Odds." Their dedication proves that with collaboration and compassion, meaningful transformation is possible.

I extend my sincere gratitude to our Board, staff, donors, and partners for your unwavering support. While challenges remain, we move forward with confidence, unity, and belief in what is possible – continuing to change lives, against all odds.

Advocate Terry-Lynne Killops
Chairperson of the Board

At Starfish Greathearts Foundation, our mission is rooted in a deep belief that every child deserves the opportunity to thrive – regardless of their circumstances.

To realise this, we focus our efforts across three critical and interconnected areas:

- Expanding Access to Essential Services: health, education and child protection services to children
- Strengthening the capacity of Community-Based Organisations (CBOs) to better manage support programmes to Orphaned and Vulnerable Children (OVC)
- Mobilising Resources for Sustainable Impact

"Success is not measured by what you accomplish, but by the opposition you have encountered, and the courage with which you have maintained the struggle against overwhelming odds."
ORISON SWETT MARDEN

Our Work

Developing

Outcomes-focused, evidence-based programmes that improve children’s lives.

An **eight faceted** approach to **ensuring orphans and vulnerable children** are **valued, protected** and **empowered** to reach their **full potential**



Health & Nutrition



Safe Environments



Sustainable Development Communities



Trained Skilled Community Careworkers



Activated Learning from Antenatal Adolecense



Research Caregiving



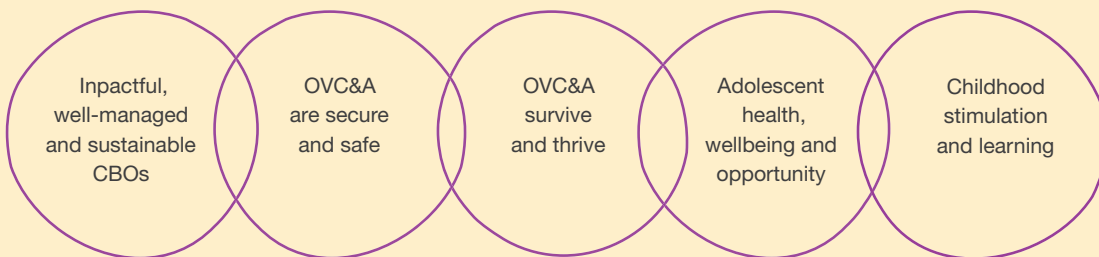
Family Strengthening Home Visits



Income & Economics Strengthening

Providing

Transformative services grounded in trust, collaboration, and relationships.



Challenging

Society’s response to vulnerability, advocating for safer, stronger communities.



Health



Nutrition



Responsive Caregiving



Security & Safety



Stimulation & Learning

Letter from the Team

As we reflect on 2024/2025, the theme “**Against All Odds**” truly defines our journey. This year tested the resilience of the communities we serve, yet through every challenge, we witnessed extraordinary courage, compassion, and commitment.

Despite limited resources, inequality, and economic hardship, vulnerable children and their caregivers have continued to hope and strive for a better future. Because of your unwavering support, Starfish was able to stand beside them—strengthening their resilience and lighting the way forward.

Against all odds, we deepened our impact across our four pillars: **Early Childhood Development, Nutrition, Health, and Social Services**. Through our partnerships, we supported over 35,000 children across five provinces. We expanded play-based learning, ensured access to nutritious meals, brought healthcare closer to communities through our Wellness Wagons, and protected children and families through vital social services.

Real change is never easy—but every act of kindness, every donation, and every partnership makes transformation possible.

Thank you for believing in our mission and in the children we serve. Your generosity fuels this movement of hope and change. Together, we will continue to rise – **against all odds** – until every child has the opportunity to thrive.

With heartfelt gratitude,
The Greathearts Team



“It’s not how much we give but how much love we put into giving.”

Mother Teresa

One
Starfish®
at a time!



Highlights

Theme: “Against All Odds”

In 2024/2025, Starfish Greathearts Foundation reaffirmed its commitment to walking alongside South Africa’s most vulnerable children, their families, and the community-based organisations that care for them. Against the backdrop of economic uncertainty, social instability, and deepening inequality, Starfish not only sustained its efforts but reached new heights – ensuring that thousands of children continued to receive education, nourishment, healthcare, and psychosocial support.

This year, we celebrated resilience. We witnessed children take their first steps into school with confidence. We saw caregivers grow in skill and strength through our training programmes. We watched communities rally together to keep hope alive. And we did it all together – with partners, donors, volunteers, and staff who believed in the power of children to overcome, grow, and flourish – against all odds.



Expanding Early Childhood Education and Literacy

In 2024/2025, Starfish strengthened its Education Pillar through focused investment in Early Childhood Development, supporting over a dozen ECD centres with resources, training, and learning materials. Through our partnership with Book Dash, more than 2,800 children’s books in six languages were distributed, many to first-time book owners. Daily literacy and play-based learning activities helped children build essential skills and develop a love for learning.

Welcoming a New Partner: The Launch of the Community Based Organisation in Tembisa

One of the Foundation’s proudest moments in 2024 was the launch of a new Community-Based Organisation in Tembisa – a powerful symbol of our commitment to ensure that no child is left behind. With the generous support of Røring Creative Kin and Investec Bank SA, the centre was refurbished and branded to create a safe, welcoming space for vulnerable children. Today, the centre provides educational support, nutritious meals, structured daily activities, and access to social and health services, offering hope, protection, and opportunity to orphaned and at-risk children in this underserved community.



Growing Our Health and Wellness Programme

Health remained a cornerstone of our work in 2024/2025. With limited access to clinics in many communities, Starfish brought care directly to children and families through our Wellness Wagon, providing screenings, education, and referrals. Over 34,000 health checks – including eye tests, TB and HIV screenings, and essential assessments – were conducted across five provinces, offering many children their first formal check-up and connecting families to life-saving care.

We also expanded our Maternal Health programmes, equipping caregivers with vital guidance on child development, immunisation, and nutrition during the early years.





Nurturing Emotional Wellbeing through Social Services

Social Services remain critical in addressing the effects of poverty and trauma on the children we support. Many have lost parents to HIV/AIDS or COVID-19, or face violence, neglect, or substance abuse. In 2024/2025, Starfish expanded psychosocial support through counselling, art and play therapy, group discussions, and workshops on child protection, conflict resolution, and positive parenting.

Families received assistance with social grants, legal documents, and home visits, ensuring every child is safe, seen, and supported. Though each story is unique, every child shares the same dream: to be loved, to belong, and to have a future.

Fighting Hunger, One Meal at a Time

Hunger remains a major barrier to a child's development, making our Nutrition Programme essential in 2024/2025. At every CBO, children received daily nutritious meals to support growth, focus, and energy. Many CBOs also ran or maintained community vegetable gardens, teaching children about farming, responsibility, and healthy eating while providing fresh produce. Thanks to this programme and our generous donors, thousands of children learned, played, and thrived on full tummies and bright smiles.



Strengthening Through Partnerships

Starfish's work thrives on strong partnerships. In 2024/2025, we were grateful for the generosity and consistency of our supporters:

- **Investec Bank SA** and **MyWalk** donated 938 school shoes, 685 socks, and 681 stationery packs, helping children start school with dignity. The shoes, made from recycled hospital waste, also promoted environmental sustainability.
- **BSN Medical (Essity)** contributed 9,000 nappies quarterly to support children with special needs, ensuring hygiene and care for those often overlooked.
- **Edith Venter Promotions** and Product of the Day provided staff uniforms and branded materials, boosting the professionalism and confidence of our frontline teams.



These contributions go beyond donations – they reflect trust, shared vision, and a lasting commitment to the wellbeing of children.

Highlights (continued)



“Behind every successful event and smooth operation is a dedicated team working tirelessly to bring hope and joy to the children we serve. Ensuring every detail is perfectly in place allows programmes to run seamlessly, creating moments that empower communities and brighten futures.”

Mary Anne Radmacher

Inspiring Events and Unwavering Supporters

This was a year of celebration, inspiration, and generosity. Our inaugural Starfish Charity High Tea at Investec Bank SA, themed “Against All Odds,” united corporate leaders, changemakers, and champions of our cause for a morning of storytelling and giving.

Highlights included a powerful address by Paralympian Mpumelelo Mhlongo, performances by Prev Reddy, and encouragement from our patron, Edith Venter. Special supporters Nicole and Ryan Sutton-Pryce inspired us with their fundraising efforts, including a community quiz night and a pledge to run the London Marathon for Starfish.

These moments, alongside the unwavering commitment of long-term donors, remind us that every act of kindness matters – each contribution helps transform a child’s life from survival to success.

Learning and Growing Internally

During the reporting period, Starfish strengthened its internal systems and team capacity to ensure effective, evidence-driven programmes. Upgraded monitoring tools and structured reviews improved data use and accountability, while staff training in key skills empowered our team to support partners and lead with confidence – reinforcing our ability to uplift children and families.

A Year of Defiance, Determination, and Dreams

Every number in this report has a name. Every statistic, a story. Every meal served, every book read, every hug shared was made possible through unwavering commitment and shared hope.

Throughout the reporting period, we proved once again that children can rise above their circumstances when given love, support, and opportunity. Against all odds, Starfish children are thriving. And we are honoured to walk beside them – today and always.

CONCLUSION

Operations Manager's Report



Dear supporters, partners, volunteers, funders, and the Starfish team,

This was a year of growth, resilience, and positive change. Guided by our theme, “Against All Odds,” we strengthened our projects and programmes, implementing new systems, processes, and tools to ensure quality, good governance, and better learning environments for children, teams, and parents—even in rural areas facing significant challenges. Through site visits, constructive guidance, and capacity-building initiatives, our centres improved management, efficiency, and programme delivery. Partnerships with like-minded organisations and participation in national training rollouts, such as with NECDA, further amplified our impact.

Thanks to the dedication of our teams and the generosity of our supporters, over 35,000 children benefited from better nutrition, health, education, and overall development throughout the reporting period.

We are deeply grateful to all who contributed to Starfish this year. Your continued support allows us to uphold our mission and vision, giving vulnerable children the best possible start in life.

Poonam Dwarkaram
Operations Manager

“A person's a person,
no matter how small.”
DR. SEUSS

Key achievements include:

- **Nutrition:** Consistent use of the Starfish cookbook and menus, alongside monthly food deliveries to all centres.
- **Social Services:** Increased access to birth certificates, Road-to-Health cards, and timely immunisations.
- **Health & Wellness:** Strengthened programmes, including maternal care, ensuring quality service delivery.
- **Training & Development:** Online training empowered our ECD teams to implement best practices, improving the quality of care and education.

Programme Overview

Nature of the Project:

The Starfish Greathearts Foundation takes a holistic approach to child vulnerability, addressing **health, early childhood education, nutrition** and **child protection**. Through strong partnerships with Community-Based Organisations (CBOs) in local communities, we provide support that is sustainable, contextually relevant, and tailored to the unique needs of children and families.

Results This Year:



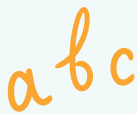
We capacitated and supported **14 Community-Based Organisations**, strengthening their ability to deliver vital services effectively.



Over 35,000 vulnerable children were reached with life-changing programmes across five provinces, ensuring increased access to education, nutrition, health services, and protection.



Referral systems for **Tuberculosis (TB)** and **HIV** were significantly **strengthened**, facilitating early diagnosis, treatment, and ongoing care for affected children and families.



Our **Early Childhood Development (ECD)** and **toy library infrastructures** were expanded, creating safe, stimulating environments where young children engage in play-based learning critical for their cognitive and social growth.



We provided **daily nutritious meals** to thousands of children, combating food insecurity and promoting healthy physical and mental development.



Counselling and **emergency intervention services** were delivered to families experiencing crises, ensuring protection, psychosocial support, and stability during times of hardship.

Challenges per CBO:

Despite our progress, partners faced ongoing challenges affecting children and programme effectiveness:



Food insecurity

Heightened by inflation and economic instability, impacting children's nutrition and health



Rising transport costs

Limiting access to services for families and outreach workers, hindering programme delivery and monitoring



Limited ECD spaces

Constraining the number of children who can benefit from quality learning environments and caregiver support

Starfish Interventions:

To address these challenges, the Foundation implemented targeted interventions such as:



Securing food parcel funding to supplement daily meals and provide emergency nutrition support to households experiencing acute food shortages.



Offering infrastructure support to expand and improve ECD centres and toy libraries, creating more welcoming and resource-rich spaces for children's development.



Conducting ongoing training sessions for CBO staff and caregivers, enhancing skills in child development, health screening, and social support.



Deploying mobile outreach programmes that bring essential health and social services directly to hard-to-reach communities, improving accessibility and continuity of care.

Partners Involved:

Our success is made possible through the generous support and collaboration of dedicated partners including:

- Investec Bank SA, providing critical funding and support for nutrition and education initiatives.
- Book Dash, donating thousands of books to promote literacy and learning.
- BSN Medical (Essity), supplying essential medical and hygiene products.
- Røring Creative Kin, contributing infrastructure and maintenance support.
- Edith Venter Promotions and Switch Branding, offering marketing and promotional services to amplify our message and outreach.
- St John SA, delivering first aid training and health education to staff and community workers.
- Local clinics, educators, and caregivers, whose frontline work is fundamental to the success and sustainability of our programmes.



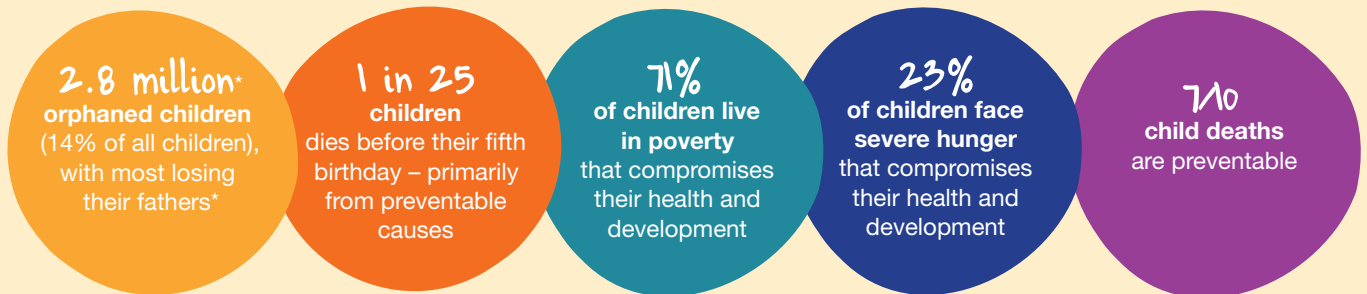
The Need

Starfish Greathearts Foundation partners with community-based organisations to support vulnerable children by strengthening access to healthcare, quality education, and child protection services.

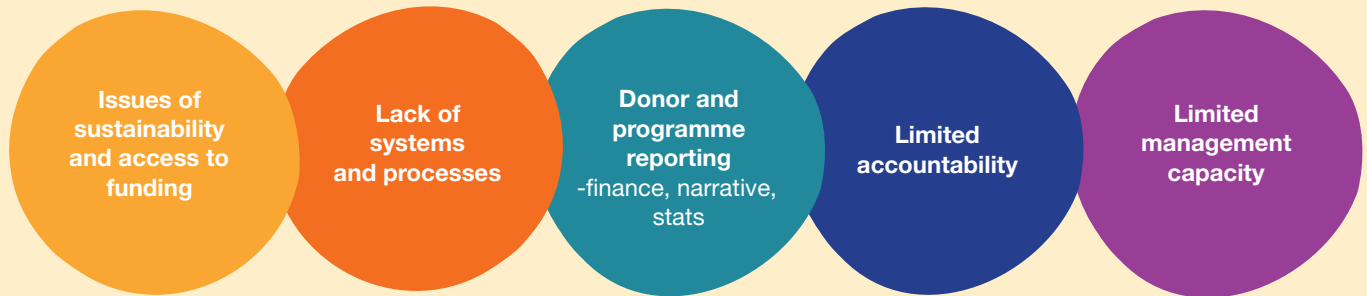
Thanks to your generous support, thousands of children can continue their education with the dignity, hope, and confidence they deserve. In their own words, **here is what your support means to them:**

Current Reality

Children Orphaned or Vulnerable (OVC)



Community Based Organisations



“Every partnership we form is a promise to stand beside the children and communities we serve, even when the odds are stacked against them. It’s not just about donations; it’s about joining hands, sharing hearts, and building a future where every child has a real chance to thrive. Together, we are rewriting what’s possible.”

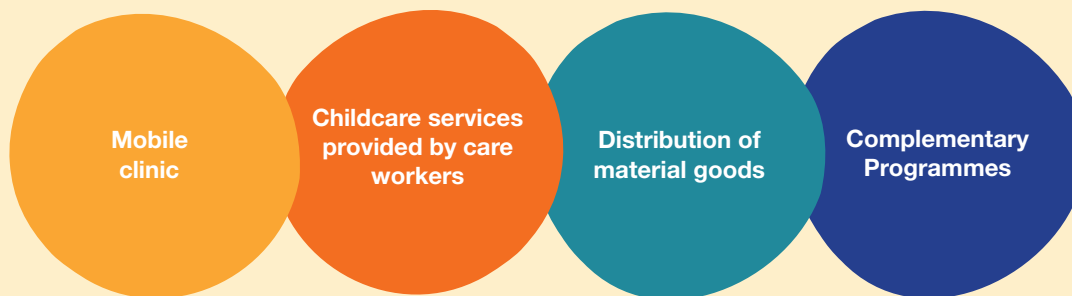
Mpiliso Skosana
Partnerships and Engagements Officer

* Sources: Statistics South Africa (Child Poverty and Household Surveys); UNICEF South Africa Child Nutrition Reports; World Health Organization Child Mortality Data.

Our response

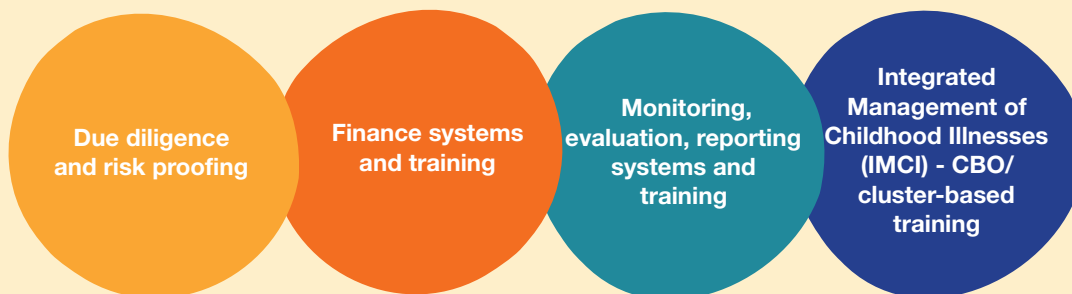
Wellness programme

To safeguard the physical, mental and social-emotional wellbeing of children, by improving access to health care services, food and nutrition.



CBO Capacity Development

To help strengthen the institutional capacity of CBOs



“Behind every number is a story, and behind every story is a child whose life we’re helping change. Monitoring and evaluation isn’t just about metrics it’s about accountability, learning, and making sure our interventions truly matter. At STARfish, we use data to listen, adapt, and ensure that even against all odds, our impact is real, measurable, and lasting.”

Thuso Matsharu
Monitoring and Evaluation Officer



Starfish
GREATHEARTS FOUNDATION
LIFE, HOPE AND OPPORTUNITY



Starfish Competencies

Community-Centric Programme Delivery

Starfish partners with local Community-Based Organisations (CBOs) to implement programmes that directly serve Orphaned and Vulnerable Children (OVC). By embedding support at the grassroots level, we ensure services are culturally relevant, accessible, and sustainable. Our model strengthens local systems to deliver quality care in health, education, nutrition, and protection.

Capacity Building and Organisational Strengthening

We empower CBOs with skills, tools, and mentorship to improve governance, financial accountability, programme design, and child safeguarding. Through structured training and ongoing support, Starfish builds long-term capacity that enables our partners to manage complex child-focused programmes effectively and independently.

Monitoring, Evaluation, and Learning (MEL)

With robust M&E systems like REDCap, quarterly reviews, and evidence-based frameworks, we track outputs and outcomes across all interventions. Our MEL approach ensures that decisions are guided by real-time data, continuous learning, and accountability – enabling responsive programming and measurable impact.

Holistic Child Support

Our integrated approach addresses the multi-dimensional needs of children – healthcare, psychosocial support, early childhood development, education, nutrition, and protection. We work across pillars to ensure that each child receives wraparound support, reducing vulnerability and increasing their chances of thriving.

Strong Partnerships and Stakeholder Engagement

Starfish cultivates mutually beneficial relationships with donors, corporates, CBOs, government departments, and development networks. Our ability to engage strategically with diverse stakeholders ensures programme sustainability, increased reach, and collaborative innovation in the child rights sector.

Resource Mobilisation and Fundraising Expertise

We raise and manage funding from international and local donors, philanthropic trusts, corporate social investment (CSI), and individual donors. Our transparent financial management, clear reporting, and impact-driven story telling enable us to maintain donor trust and long-term support.

Child Safeguarding and Protection

Starfish upholds the highest standards of child safeguarding. All staff, partners, and volunteers undergo training and adhere to our Child Protection Policy to create safe, nurturing environments. We actively promote children's rights and advocate for their protection at all levels.

Innovation and Adaptability

In a constantly changing social landscape, Starfish embraces innovation – integrating technology into programme delivery, piloting new approaches, and adapting swiftly in response to community needs. Our flexible and creative mindset enables us to respond effectively to crises such as pandemics or natural disasters.

High-Impact Storytelling and Advocacy

We use real stories and data to spotlight the challenges faced by vulnerable children and the solutions that work. Our communications inspire action, mobilise support, and raise awareness about the importance of investing in early childhood development and child protection in South Africa.

Experienced and Passionate Team

Our dedicated team of professionals brings expertise in public health, education, social work, MEL, fundraising, and community development. Starfish staff operate with integrity, compassion, and a deep commitment to the children and communities we serve.



Our Key Strengths Lie in

Grant management

Project management

Capacity Development through coaching (via phone, email, Zoom or Teams meeting and on - site support)

With 23 years' experience we are



A leader in innovative, sustainable and cost-effective programmes



A trusted custodian of donor funds with 23 years' experience



Demonstrates professional reporting and accountability, with established operating systems and processes



Impact measures are established and monitored on a monthly/quarterly basis



Starfish operates within a 20 (Ops): 80 (Programmes) cost ratio



Creates shared value- social return on investment

Desired Reality (impact)

Children in South Africa are valued, protected and empowered to realise their dreams

Fundraising & Partnership with grant-makers for child & youth care impact

Identify potential service delivery partners (SDP's)

Comprehensive Capacity Audit

Starfish Value Add

Pre-assessment

Starfish conducts a pre-assessment with each CBO, challenges are analysed and plans for improvement jointly developed. Focus areas include:

- Capabilities - skills and knowledge
- Systems and processes
- Stakeholders - staff, community and child participation
- Child health

Intervention

Starfish provides the following support:

Funding

- Material goods
- Training, mentoring, on-site coaching
- Developing institutional systems and processes
- Building referral networks - linking CBOs to local services

Post-assessment

Starfish conducts a post-assessment on the following:

- Capabilities - skills and knowledge
- Systems and processes
- Stakeholders - staff, community and child participation
- Child status



Build governance & management capacities

Robust SDP partnership agreement (Accountability, capacity development)

Implement systemic OVC&A Programmes

Monitoring of governance, management & programmatic efficacies

Measure impact of services delivered, organisational sustainability

Plan together for sustained / increased impact

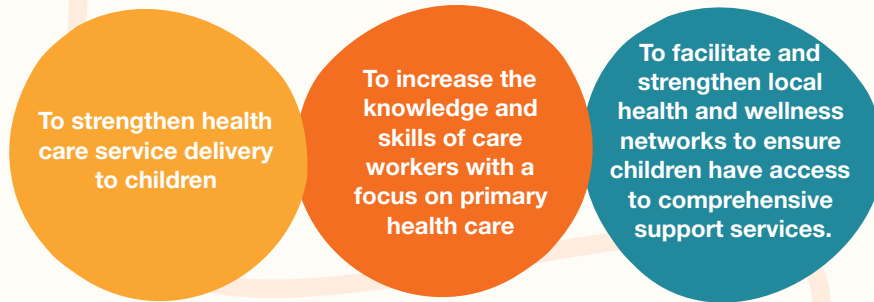
Provide financial support

Flagship Programmes

The Wellness Programme

The Wellness Programme aims to safeguard the physical, mental, and social wellbeing of children to maximise their learning potential.

Key objectives include:



The programme comprises four integrated parts:

Wellness Wagon (Mobile Clinic)

The Wellness Wagon was launched to overcome barriers to healthcare access, including long clinic queues, limited staffing, and challenges for unaccompanied children. Staffed by a professional nurse and driver, the mobile clinic visits schools and community hubs, delivering essential health services directly to children. It operates as an integral part of the provincial Department of Health network and referral system.

Childcare services provided by care workers

Health, education, and child protection services are provided by dedicated care workers who receive a stipend for their invaluable contributions. **These services include:**

- Administration of ARV and TB medication to support effective treatment.
- HIV/AIDS adherence support to ensure treatment continuity.
- Home-based care for personalised health services.
- Transport to school, enabling regular and safe attendance.
- Assistance with school fee exemptions to reduce financial barriers.
- Counselling to address emotional and psychological needs.
- Support with accessing vital documents and grants to secure essential resources.

These comprehensive services are crucial to the well-being and development of children and families, ensuring access to health, education, and social support

Distribution of material goods

Starfish provides essential material goods to support the well-being and development of children in need. **These include:**

- Blankets to keep children warm during colder months.
- Nutritious food to ensure they have regular meals and optimal nourishment.
- School uniforms to enable them to attend school with dignity and pride.
- Educational resource packs containing books and toys that stimulate learning and creativity.
- These items are crucial in addressing immediate needs and promoting long-term growth and resilience among the children we serve.

The programme comprises five integrated parts: *(continued)*

Complimentary Programmes

We strengthen food security through community gardens and nutrition education, empowering families to maintain healthy diets and build long-term resilience.

Intended outcome

Improved health and wellbeing of children

Capacity development

The programme strengthens Community-Based Organisations (CBOs) through training, mentoring, and on-site coaching. CBOs, selected from the 18 priority districts identified by the Department of Health, undergo baseline assessments to identify strengths and gaps. A tailored capacity development plan is then implemented, with progress monitored quarterly.

Key objectives include:

Developing focused action plans for learning in primary healthcare, finance, and monitoring and reporting.

Identifying organisational risks and implementing mitigation strategies.

Providing ongoing coaching support as needed, focusing on skills development opportunities.

Services provided directly by Starfish include:

- Training in finance management.
- Training in governance.
- Skills development of CBO team members.
- Capacitation of Parents.
- Establishment of Monitoring, Evaluation, and Learning (MEL) and reporting systems
- Integrated Management of Childhood Illnesses (IMCI) training at the CBO or cluster level.
- Conducting due diligence and risk assessments through quarterly site visits using the Capacity Assessment Tool.

These initiatives are designed to strengthen CBOs' operational capabilities, ensuring they can effectively deliver essential services and support to their communities.

Our Stories



Education

Little Steps, Big Dreams – The Story of Lwazi

At five, Lwazi was shy, non-verbal, and had never attended preschool. Living with his elderly grandmother in rural Eastern Cape, his basic needs were hard to meet. After joining a Starfish-supported ECD programme, he received his first book and crayons, and began daily play-based learning. Using his love of blocks, his practitioner helped him express himself. Soon, Lwazi was naming shapes and colours, singing along to songs, making friends, and dreaming of becoming a teacher. Now ready for Grade R, Lwazi’s journey shows the transformative power of early education – made possible by the support of people like you.



Health & Wellness

A Second Chance – The Story of Siphoh

Thirteen-year-old Siphoh from KZN was frequently ill and missing school. With an unemployed mother caring for four children and limited access to healthcare, the family struggled silently. When a Starfish-funded Wellness Wagon visited his community, health workers identified signs of tuberculosis, referred him to a clinic, and provided transport and guidance. With follow-up, counselling, and nutritional support, Siphoh completed his six-month TB treatment, regained his health, and returned to school with renewed energy and enthusiasm for learning. Today, Siphoh thrives, and his mother calls Starfish her “life!ine”—a testament to the impact of your support.



Nutrition

A Full Stomach, A Brighter Mind – The Story of Naledi

Eight-year-old Naledi from KwaZulu-Natal often went to school hungry, affecting her concentration and learning. When she joined a Starfish-supported aftercare programme, she began receiving daily nutritious meals, along with deworming, hygiene education, and vitamin supplements. Her focus, participation, and grades improved, and her family also benefited from food parcel distributions. As her caregiver said, “Naledi smiles now – even when there’s no reason. That’s what a full tummy can do.” Thanks to your support, children like Naledi aren’t just surviving – they’re thriving.



Social Services

Opening Doors for Little Ones – The Story of Thabo

Two-year-old Thabo from North West had never been to a clinic and lacked a birth certificate and Road to Health card, leaving him and his mother without access to essential healthcare or social support. Through Starfish’s Social Services programme, his mother was guided through birth registration and the child support grant application. Today, Thabo has his documents, receives nutritious meals at an Early Childhood Development centre, and benefits from his mother’s monthly social grant—giving him a strong foundation to thrive. Your support helps children like Thabo get the start they deserve.



Maternal Health

From Fear to Love – Thandeka’s New Beginning

At 19, Thandeka was pregnant, alone, and had never visited a clinic. Through Starfish’s Maternal Health Programme, she accessed prenatal care, education, transportation, and peer support. With guidance and encouragement, she gave birth to a healthy daughter, Nokwanda, and grew into a confident peer mentor, supporting other young mothers. Your support helps mothers like Thandeka give their children the best possible start.

Names changed to protect the identity of children and families

Starfish[®] Footprint

OUR REACH

35 142

children

5

provinces

3 108

home visits
conducted

34 407

children consulted
through the WWs

735

children
attending ECD

735

children benefitting
from daily meals

Area of Focus

The Starfish Greathearts Foundation works closely with partner Community-Based Organisations across South Africa to ensure that every child— especially those orphaned and most vulnerable—is valued, protected, and empowered to reach their full potential.

Our approach is child-centred and systemic, recognising that children thrive within households and communities enriched with social capital, resources, and skills. Together, these layers ensure that every child is:

Together, **these layers** ensure that every child is:



We focus on **five** essential domains to support healthy development::



Health

Early identification and intervention for health risks.



Nutrition

Preventing developmental stunting through access to nutritious food.



Responsive Care

Creating nurturing environments that foster secure attachments and stimulating interactions.



Safety & Security

Reducing exposure to harm and adverse experiences.



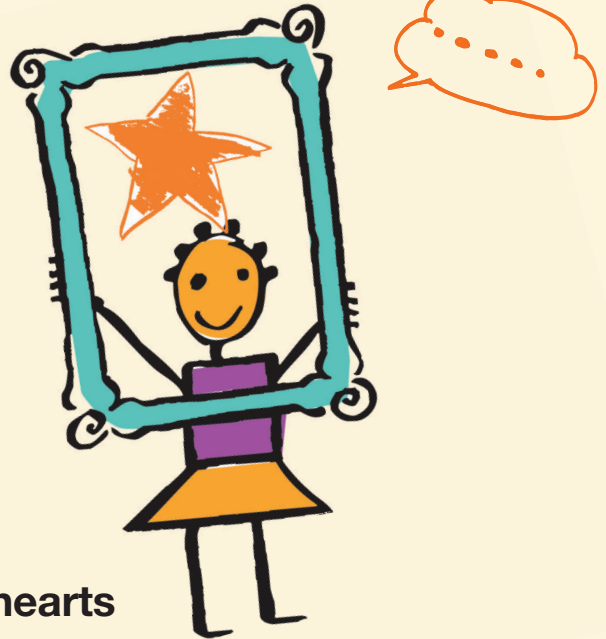
Learning & Stimulation

Equipping caregivers and communities to engage children in meaningful play and learning.

Through this integrated framework, **Starfish** enables communities provide the foundation children need not just to survive, but to thrive – against all odds.



Finance Officer



Dear Greathearts

As Finance Officer of the Starfish Greathearts Foundation, I am pleased to present the financial overview for the 2024/2025 fiscal year. Despite a challenging economic environment marked by rising costs and donor fatigue, the Foundation has maintained a strong financial position, reflecting prudent stewardship and effective resource management.

Financial Highlights

- **Total Donations received:** R 8 277 264 secured from a diversified mix of corporate partners, philanthropic trusts, individual donors, and government grants, strengthening financial resilience and programme impact.
- **Expenditure:** R 6 098 811 was spent directly on programme delivery across Early Childhood Development, Nutrition, Health & Wellness, and Social Services.
- **Operational Costs:** Carefully managed at R 2 615 031, covering staff salaries, capacity building, monitoring and evaluation, and compliance – essential for sustaining high-quality programmes.

Financial Governance and Accountability

The Foundation maintains the highest standards of financial governance, in partnership with an independent audit firm, ensuring compliance with South African accounting standards and donor requirements. **Key controls include:**

- Detailed budgeting and forecasting
- Monthly reporting and variance analysis
- Regular internal audits
- Transparent donor reporting

Our latest reviewed financial statements confirm Starfish's strong financial health and commitment to transparency.

Looking Ahead

We will continue strengthening financial systems to support sustainable growth, explore innovative funding models, and expand fundraising efforts to diversify income streams further.

We extend heartfelt gratitude to our donors and partners whose generosity enables us to transform the lives of over 35,000 vulnerable children across South Africa. Your support fuels hope, resilience, and a brighter future.

Nthabiseng Makgabo
Financial Officer

Meet the Team



Poonam Dwarkaram
Operations Manager



Lesego Mokoene
Projects Manager



Mpiliso Skosana
Partnerships and Engagement Officer



Thuso Matsheru
Monitoring and Evaluation Officer



Sian Dhewnanan
Administrator and Events Coordinator



Nthabiseng Makgabo
Finance Officer

Donors

Thank You to Our Valued Donors

At Starfish Greathearts Foundation, we are deeply grateful for the unwavering support of our donors. Your generosity and belief in our mission enable us to create real, lasting change in the lives of vulnerable children and families across South Africa.

We are committed to building strong, lasting partnerships that go beyond one-time giving – partnerships that empower communities and transform futures. Your trust and collaboration are the foundation of every success story we share. Because of you, thousands of children receive nourishing meals, quality education, essential healthcare, and the protection they deserve.

Thank you for standing with us, for believing in the potential of every child, and for helping us rise – against all odds. Together, we are making a meaningful difference that will echo for generations to come.

**With heartfelt appreciation,
The Starfish Greathearts Foundation Team**

Help support
this cause!



Click here

OUR DONORS ARE

Corporate Donors

Investec Bank SA
Bloomberg
Paladin Underwriting Managers (Pty) Ltd
Leo Shipping
My School Card/ My Difference The
Steyn Family Trust

Pro Bono Donors

JHI Excellerate
Edith Venter Promotions
Burley Boys
Connold and Associates
NewsClip
Ian Laxton
Schindlers Attorneys, Notaries & Conveyancers
Switch Design Company SA (Pty) Ltd
MyWalk
Essity
BSN medical

Financial Review

Statement of financial position

Statement of Financial Position Starfish Greathearts Foundation

As at 31 March 2025

	Notes	31 Mar 2025	31 Mar 2024
ASSETS			
Non-Current Assets			
Property, Plant and Equipment	1	8,958	191,665
Total Non-Current Assets		8,958	191,665
Current Assets			
Inventories	2	1,092	1,092
Trade and Other Receivables	3	438,170	181,176
Cash and Cash Equivalents	4	3,701,697	3,583,701
Total Current Assets		4,140,959	3,765,970
Total Assets		4,149,917	3,957,634
EQUITY AND LIABILITIES			
Equity			
Share Capital		8,357,954	8,357,954
Retained Earnings		(4,352,692)	(4,542,605)
Total Equity		4,005,262	3,815,349
Liabilities			
Non-Current Liabilities			
Finance Lease Liabilities	5	118,316	118,316
Total Non-Current Liabilities		118,316	118,316
Current Liabilities			
Provisions			
Leave Pay Provision		26,339	23,970
Total Current Liabilities		26,339	23,970
Total Liabilities		144,655	142,286
Total Equity and Liabilities		4,149,917	3,957,634

Board of Directors

Advocate Terry-Lynne Killops

Chairperson, South African Board (*Non-Executive Board Member*)



Advocate Terry-Lynne Killops is a seasoned Family Law practitioner and High Court advocate with extensive mediation experience. Occasionally sitting as an Acting Judge, she is passionate about child welfare and community upliftment. Initially Deputy Chairperson, she now leads the Starfish South African Board with dedication and vision.

Elsabe Kubie

(*Non-Executive Board Member*)



With over 20 years' experience in Human Resources, Elsabe has held leadership roles at Santam, Investec Bank SA, Alexander Forbes, and Anglo American, including executive board and C-suite support positions. Passionate about uplifting vulnerable communities, she has spearheaded internship programmes providing life-changing opportunities to disadvantaged youth. Elsabe holds a BCom in HR Management and is a registered member of the South African Board for People Practices (SABPP).

Dr. Amelia Hilgart

(*Non-Executive Board Member*)



Amelia Hilgart brings expertise as a Business Analyst, Data Scientist, and Product Manager. With a PhD background in molecular biology, she has worked on national projects such as the National Climate Change Information System and the South African Risk and Vulnerability Atlas. At Starfish, she developed the REDCap data collection and reporting system, enhancing programme monitoring and healthcare delivery across community-based partners.

Dr Jessica Price

(*Non-Executive Board Member*)



Jessica is a clinician-scientist and pediatrics specialist-in-training, with a research focus on child mortality and health policy. A Rhodes Scholar, she completed her PhD at the University of Oxford, studying under-5 deaths in rural South Africa, and continues her research at Wits School of Public Health. Actively engaged in leadership from her university days through to co-founding the Rhodes Incubator, Jessica's expertise and commitment to child health closely align with Starfish's mission to ensure every child survives, thrives, and succeeds.

Ambassador Prudence Mocumi

(Non-Executive Board Member)



Ambassador Prudence Mocumi brings over 20 years of HR and leadership experience across multinational corporations in the UK and internationally. She is the Executive Director of Crystal Consulting and co-founded EPOD Global, an HR consultancy known for driving revenue growth and securing major corporate clients. With six years of international board experience and a postgraduate degree in International Business (HR), she is a passionate advocate for gender equity and founder of a women's advancement platform. Her strategic insight and governance expertise strengthen Starfish's mission and organisational growth.

Fhatuwani Managa

(Non-Executive Board Member)



Fhatuwani is an accomplished Finance Manager with extensive experience in banking and insurance, specializing in budgeting, financial planning, taxation, accounting, and reporting. She holds a BCom Honours CTA in Accounting and an MBA from Wits Business School. At Starfish, she applies her strategic and operational expertise to strengthen financial governance, enhance organisational efficiency, and drive meaningful social impact in support of the Foundation's mission.

Nils Von Klemperer

(Non-Executive Board Member)



Nils brings over 30 years of strategic leadership in sales, marketing, and general management across multiple industries. He holds a BCom Honours in Business Administration from the University of Natal, Durban, and demonstrated early leadership through various student organisations, including the RAG charity group. His career spans FMCG, computing, footwear, and healthcare, notably at Smith & Nephew and BSN Medical, where he led the Africa and Middle East region. At Starfish, Nils leverages his extensive industry experience and strategic insight to support the Foundation's mission to uplift vulnerable children and families.

Get Involved

Ways to Give



Donate
once-off



Donate
monthly



Donate
on your birthday



Donate
your time
(volunteer)



Donate
with your
Woolworths Loyalty
Programme



Donate
by getting your
donation matched by
your organisation

Your Donations

- Provide access to primary healthcare, using mobile clinics to orphaned and vulnerable children in SA.
- Provide healthy meals daily and monthly food parcels.
- Provide quality early childhood development and educational support.

To Find out more

Contact Mpiliso Skosana
E-mail: media@starfish.org.za / info@starfish.org.za
Company No. 2003/002865/08
Non-Profit Organisation No. 039-447-NPO



Design Quarter Corner William Nicol Drive & Leslie Avenue Fourways 2191

Postnet Suite #115 Private Bag X9951 Sandton 2146

Email: info@starfish.org.za

Registration no: 2003/002865/08

NPO number: 039-447-NPO

PBO number: 930008631



Starfish[®]
GREATHEARTS FOUNDATION
LIFE, HOPE AND OPPORTUNITY

www.starfish-greathearts.org